

Wool Weekly

LANDMARK

Friday, 7 June 2019

Wool Market Movements

- Sales in Sydney and Melbourne saw falls occur in all Merino Price Guides (MPGs). The EMI fell by 23 cents to 1,864 c/kg clean. The national pass-in rate was 15.5%. Next week all three centres will operate with 29,989 bales currently rostered for sale.
- In Sydney on Wednesday 18.5 µm and finer lots with Best style and favourable additional measurements attracted strong buyer support. These lots maintained last week's levels, however poorer style lots with low staple strength (<30 N/ktex) were discounted which pushed most MPGs lower. Thursday's sale saw further reductions in all MPGs with finer microns most affected (down by more than 30 cents). Merino skirtings eased on Wednesday, with 17.0 µm and finer lots up to 50 cheaper. On Thursday best style skirtings with favourable additional measurements maintained Wednesday's levels while those with >3% VM and low strength fell by up to 30 cents. Crossbred lots eased on Wednesday, with finer lots up to 50 cents cheaper, but no further change occurred on Thursday. Oddment lots were generally unchanged. The Northern Regional Indicator fell by 26 cents to 1,883 c/kg clean. The Northern Merino Carding Indicator dropped 15 cents to 1,021 c/kg clean. The Sydney pass-in rate was 14.0%.
- The Melbourne sale started slowly on Wednesday with high early pass-in rates which decreased as the sale progressed. Best style lots with high strength were keenly sought by buyers. The MPGs eased by between 5 and 10 cents. Lower style lots dominated Thursday's selection and dampened the tone of the sale. Merino skirtings followed the same trend as the Merino fleece lots on Wednesday, but a high proportion of poorer style, faulty lots with high VM on Thursday weakened the skirtings market. Well prepared crossbred lots attracted strong demand while oddment lots lost ground. The Southern Regional Indicator lost 22 cents to 1,852 c/kg clean while the Southern Merino Carding Indicator dropped 54 cents to 992 c/kg clean. The Melbourne pass-in rate was 16.6%.



2019 MerinoLink Annual

Conference & Field Day

June 19th & 20th

Armidale, NSW

To book tickets: www.trybooking.com/BBKKG

Enquiries: www.merinolink.com.au
conference@merinolink.com.au

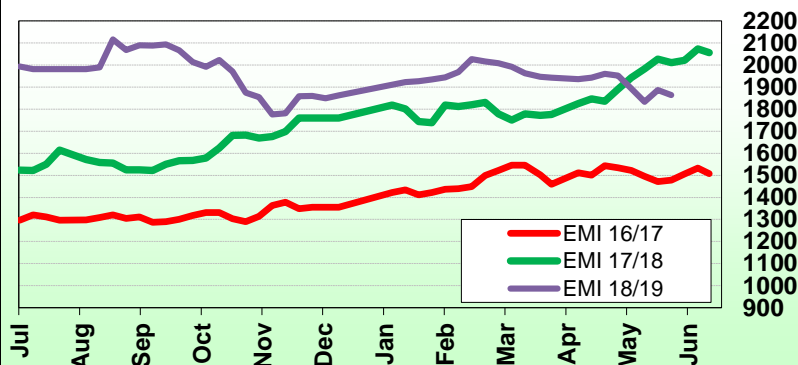
AWEX WEEKLY WOOL PRICES

Regional Indicator	North	Wkly Chg	South	Wkly Chg	West	Wkly Chg
c/kg clean	1883	-26	1852	-22	-	-

MICRON PRICE GUIDES						
16.5	-	-	-	-	-	-
17	-	-	-	-	-	-
17.5	2345	-43	2271	-14	-	-
18	2318	-43	2253	-29	-	-
18.5	2258	-27	2225	-25	-	-
19	2193	-18	2192	-36	-	-
19.5	2182	-21	2189	-27	-	-
20	2179	-18	2186	-29	-	-
21	2174n	-	2184	-30	-	-
22	-	-	2156n	-25	-	-
23	-	-	-	-	-	-
24	-	-	-	-	-	-
25	-	-	-	-	-	-
26	-	-	1448n	-	-	-
28	1115n	-10	1121	-2	-	-
30	-	-	939n	+4	-	-
32	-	-	618n	0	-	-
MC	1021	-15	992n	-54	-	-

AWEX EMI 2016/17 & 2017/18 Season vs Current

Currently: 1864 c/kg clean



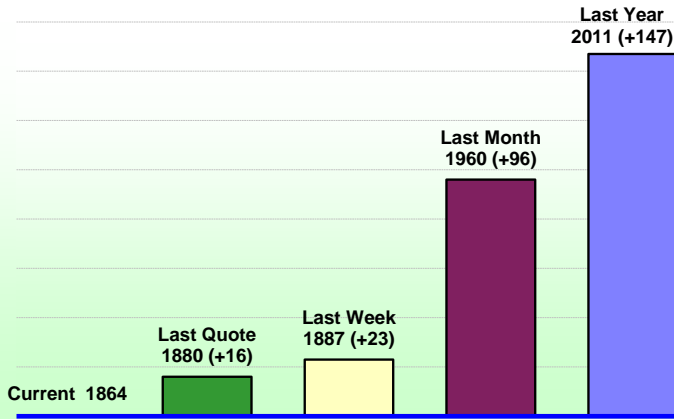
Upcoming Auction Volumes

	11/06/2019	18/06/2019	25/06/2019
Northern	S50	S51	S52
Sydney	8,242	7,570	8,735
Southern	M50	M51	M52
Melbourne	15,136	12,040	17,045
Western	F50	F51	F52
Fremantle	6,611	RECESS	6,900
Total	29,989	19,610	32,680

THIS WEEK'S SALES STATISTICS

Centre	Bales Originally	Bales Offered	Bales Sold	Pass in Rate
Northern	7,530	9,495	8,162	14.0%
Southern	14,398	12,249	10,218	16.6%
Western	-	-	-	-
TOTAL	21,928	21,744	18,380	15.5%

AWEX Weekly Eastern Market Indicator Quote Comparisons



AUD vs USD from 06-Jul-04 to 06-Jun-19



Micron	EMI	16.5	17	17.5	18	18.5	19	19.5	20	21	22	23	25	28	AUD
Current MPG's	1864	-	-	2308	2286	2242	2193	2186	2183	2179	2156	-	-	1118	0.697
10 year Average	1239	1819	1719	1657	1595	1529	1462	1404	1354	1324	1292	1233	981	693	0.857
This time last year	2011	3097	2849	2705	2512	2353	2278	2264	2259	2255	2237	2231	1704	1013	0.765
10 year High	2116	3187	3007	2831	2683	2569	2462	2414	2391	2371	2350	2308	1828	1323	1.090
10 year Low	721	1259	1152	1092	1021	955	887	802	734	712	702	692	551	424	0.633
% Reported above current	8%	0%	0%	16%	13%	10%	9%	8%	7%	7%	8%	0%	0%	3%	96%
Diff b/w High & Current	252	-	-	523	397	327	270	228	209	192	194	-	-	205	0.393
Diff b/w Ave & Current	625	-	-	651	691	713	730	781	828	855	864	-	-	425	-0.159

Percentile Bands

95%	1957	2978	2758	2573	2433	2351	2295	2274	2258	2238	2219	2125	1501	997	1.050
90%	1826	2606	2516	2462	2354	2238	2150	2068	2014	1969	1909	1626	1248	912	1.040
80%	1500	2458	2335	2230	2118	1975	1824	1692	1594	1500	1442	1375	1161	825	1.006
75%	1367	2277	2213	2155	2027	1851	1672	1552	1485	1438	1391	1353	1119	800	0.979
60%	1244	1667	1608	1565	1529	1485	1447	1400	1361	1326	1294	1243	1003	706	0.908
50%	1169	1557	1497	1477	1451	1413	1361	1320	1274	1259	1230	1189	931	671	0.859
40%	1093	1498	1401	1361	1333	1299	1270	1237	1208	1194	1171	1137	900	649	0.782
25%	1019	1400	1306	1268	1222	1193	1171	1142	1126	1113	1088	1058	857	592	0.753
10%	872	1316	1241	1193	1156	1107	1044	969	919	895	865	834	687	462	0.714

Indicative Basis Contract Prices

Date	MPG	17	17.5	18	18.5	19	19.5	20	21	22	23	28
Jun-2019		2185	2180	2150	2140	2120	2110	2105	2100	2070	2000	1080
Jul-2019		2115	2110	2080	2070	2050	2040	2035	2030	2000	1930	1080
Aug-2019		2105	2100	2070	2060	2040	2030	2025	2020	1990	1920	1080
Sep-2019		2085	2080	2050	2040	2020	2010	2005	2000	1970	1900	1050
Oct-2019		2065	2060	2030	2020	2000	1990	1985	1980	1950	1880	1000
Nov-2019		2035	2030	2000	1990	1970	1960	1955	1950	1920	1850	980
Dec-2019		2005	2000	1970	1960	1940	1930	1925	1920	1890	1820	960
Jan-2020		1985	1980	1950	1940	1920	1910	1905	1900	1870	1800	940
Feb-2020		1965	1960	1930	1920	1900	1890	1895	1890	1860	1790	920
Mar-2020		1955	1950	1920	1910	1890	2007	1885	1880	1850	1780	900
Apr-2020		1945	1940	1910	1900	1880	1997	1875	1870	1840	1770	880
May-2020		1925	1920	1890	1880	1860	1977	1855	1850	1820	1750	860
Jun-2020		1905	1900	1870	1860	1840	1957	1835	1830	1800	1730	840
Jul-2020		1885	1880	1850	1840	1820	1937	1815	1810	1780	1710	820
Aug-2020		1865	1860	1830	1820	1800	1917	1795	1790	1760	1690	800

All prices on this sheet are listed in c/kg clean. Basis Contract prices are **indicative only**. The levels are published to use purely as a guide. For more information regarding forward contracts or to submit a GTC or Target order, contact your local Landmark wool manager, or call Landmark Risk Management on 1800 629 396.

Please use above figures as a guide to submit your GTC or Target orders. Call 1800 629 396.